

# An Integrated Solution for Time & Attendance

# FORTUNA

**Gateway 2000-Tip**



## Gateway 2000-Tip

Gateway-2000 Tip is a state-of-the-art Time & Attendance System with a Biometric Finger Print Authentication Device, specifically designed to provide irrefutable personal verification. It is a stand-alone, wall-mounted device with a Finger Print Scanner to enroll users, store their Finger template record, keep Attendance Transaction logs, and interface with computers.

All the exacting demands of the Time Office are packed into this ruggedized product, having the capacity to cater to large organizations/ Industries.

### TECHNICAL INFORMATION

CPU	High Performance 32 bit Philips CPU
Memory	25000 Transaction Storage (upgradable)
Keyboard	4X4 Membrane Keyboard
Display	128 X 64 Pixel Graphic Backlit LCD
Power	Wide Range SMPS (90-260V @ 50Hz +/-5Hz)
UPS	Using MFB for 12 hours operational Back-up
Finger Print Sensor	Optical(16 X 19 mm) @500 DPI (280 X 320)
Sensor Surface	Scratch Proof, effective for dry & wet Finger
Algorithm	Minutia Extraction (FVC2006 Award winning)
Template	9500 Template / 4750 users
Allowable Finger rotation	+ / - 90 Degrees
Identification Time	< 1 Second(Typical) for 2000 Fingers
Out Reader I/F	Finger Print/Smart/Proximity as OUT Reader
Relay Output	12V Wet / Potential Free Contact O/P (2 Nos)
Dimension	223(H) X 100(W) X 86(D) mm

## Finger Print Identification : 1 : N Mode

It provides real time identification of Finger without any user input, such as card show/PIN entry (1 : N Mode). Upto 9500 fingers may be stored with upto 2 fingers per user. It provides a self learning algorithm for adopting the change in the finger usage pattern.



## Real Time Attendance

User puts his finger on fingerprint reader. The terminal compares live finger with the finger stored (during enrollment) in the built-in memory and stores Attendance log only upon match, with Name & Employee ID Display on LCD, all within 1 Second



## Prevention of Proxy Attendance

This provides enhanced security, superior speed and most importantly eliminates Buddy/Proxy Punching, since the personal finger prints cannot be copied, lost or stolen. The FVC award winning optical sensor is engineered for impeccable finger scanning & perfect finger parking angle.



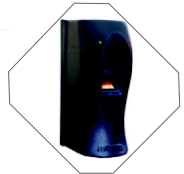
## Card Reader Integration

A HID iClass/Mifare Reader may be integrated inside to store in the template data in the Card memory to provide "Match-on-Card" functionality for Unlimited user, especially suited for large organization/global operation. HID/EM Proximity reader can also be integrated.



## Access Control : Out Reader Interface

It can be interfaced to MicroTIP, biometric Reader Module such that finger enrolled in the Master will get replicated in the Slave/Out Reader automatically. Card Readers may also be interfaced. This may be used for Access Control application or OUT Reader for Attendance system.



## Connectivity & Communication

Networking of Terminals is accomplished using Ethernet LAN/WAN or using Wifi Access Point. Terminals may be connected to Internet Server using Broad Band or GPRS. A PC may directly be connected to the terminal using RS232C/RS 485 Bus. Data may be transferred using USB Pen Drive.



## Industry Standard

A Vandal-resistant, wall mounting MS Panel having locking door with transparent acrylic cover & a cut-out to insert the finger, may also be provided for physical security to Gateway 2000\_Tip from natural or artificial trauma/vandalism. A Lamp turns GREEN upon the finger acceptance.



## Management Information System

The Attendance logs from Gateway 2000\_Tip is uploaded to Server PC in online/scheduled or on demand, to a user specified database or in form of user configurable text file. MIS Attendance Reports may be generated using Web or Client-Server based Attendance Management Software.



# Integrated Solution Summary

## Smart Finger :

### Finger Print Enrollment Station

The Smart Finger Application is a Windows based application which facilitates the finger image capture using a USB based Finger Print Reader Module and stores the digitized finger template data in the centralized Server database. Finger Print Enrollment & Card Personalization Application Software may be deployed at one or many PC's on Company's LAN network. It can also captures Employee Photograph using USB camera.

- ❖ It gives a advanced finger print management tool with downloading of finger template to Attendance terminal automatically upon assignment.
- ❖ It can also upload the finger template from Attendance Terminal for centralized database generation.
- ❖ It is featured with add-on functions such as ID Card printing, marking Employee Black-listed.

Designed for an enterprise wide Time & Attendance System, the Solution is based on LAN/WAN/GPRS infrastructure and a complete workflow automation with a centralised repository, and providing a seamless and flexible operation over the entire cycle of finger enrollment, badging, provisioning, deployment, online Reports & Deprovisioning.

## e Time Pro

Web based Attendance Management Software

e Time Pro is web based application. It can be loaded on an Internet Server on Web or on an Intranet Server. Any Computer / Thin Client having a Web Browser (no Client software required!) can be used with proper User Authentication. The software is fully configurable & user friendly.

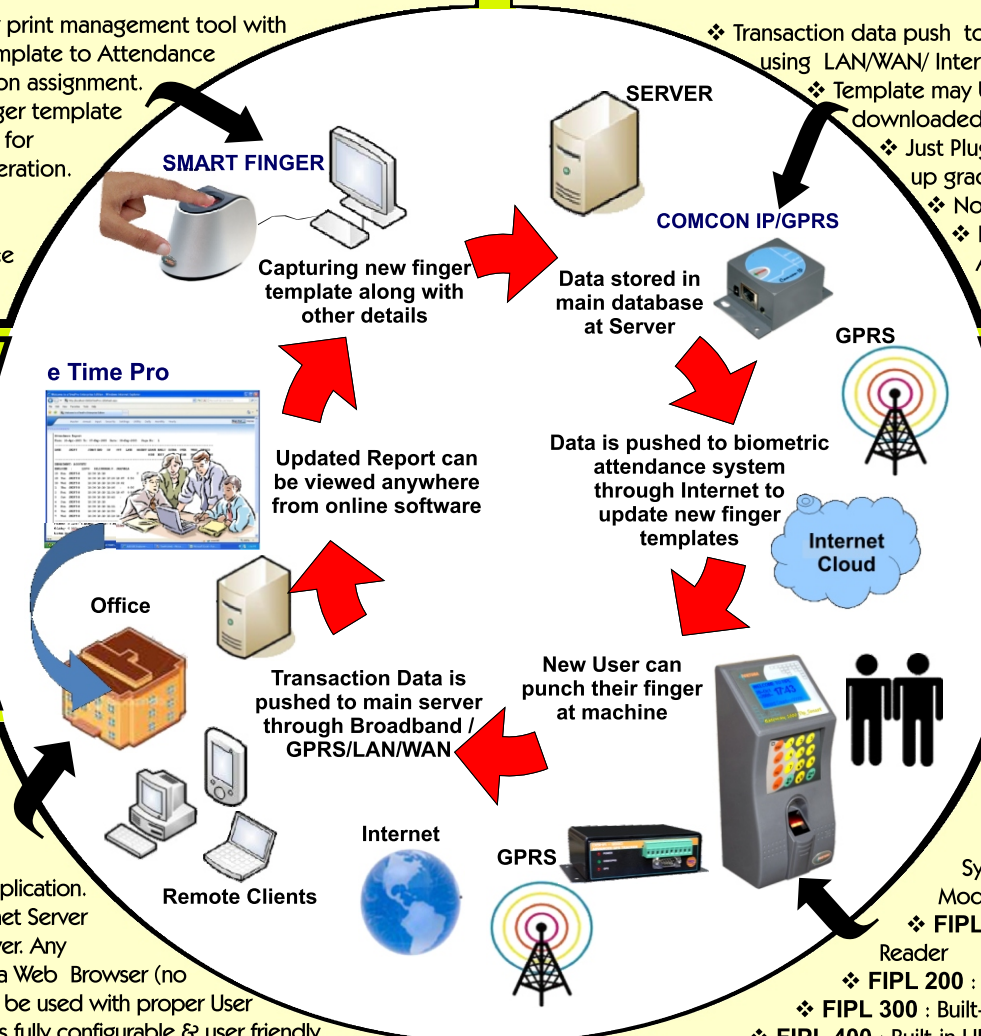
- ❖ The Attendance Data is pushed to the Server in online mode to Internet Server using web or to Intranet Server using wired LAN/ wireless Wifi & update the database residing on the Server.
- ❖ The raw attendance data is processed automatically (no user intervention) The Attendance report is available instantaneously upon punching.
- ❖ Individual User can log-in to check ones own attendance & post his Leave application in the system for further processing.
- ❖ eTIME Pro takes care of all time Office related functions such as Master Maintenance, Manual Attendance, Leave, Tour/On-Duty input, Over Time Calculation & sanction, Shift Rotation, Late Rules etc.
- ❖ This provides host of Daily, Periodic & Yearly Reports related to Time Office. It also Provides the data required for Payroll Calculation.

## Comcon IP/GPRS :

### Internet Protocol Converter

This is meant for online Attendance Data push from any where in the world to a Server, just by using Broad Band or GPRS infrastructure. In case the internet is not available on either side then the data gets stored in the Gateway 2000\_Tip. Upon a clear connection, it automatically connects & pushes the data which are not uploaded to Server. Unlimited Attendance terminals may be handled simultaneously in asynchronous mode.

- ❖ Transaction data push to Server from remote terminal using LAN/WAN/ Internet/GPRS connectivity.
- ❖ Template may be uploaded from or downloaded to remote Terminals
- ❖ Just Plug-n-Play installation with Easy up gradation and scalability
- ❖ No extra IT hardware installation
- ❖ Remote Management of Attendance Terminal



## Supported Card Reader



## ORDERING INFO

- ❖ Gateway 2000 Tip : Bio-Attendance Recording System with Keyboard in 1: N Mode, RS 232C, built-in UPS
- ❖ FIPL 150 : Built-in EM Proximity Reader
- ❖ FIPL 200 : Built-in HID Proximity Reader
- ❖ FIPL 300 : Built-in MIFARE Smart Card Reader
- ❖ FIPL 400 : Built-in HID iClass Reader

- ❖ SMART FINGER : Centralised Finger Print Enrollment Station
- ❖ MicroTIP/MicroPROX/Prox Point/MicroSMART : Out Reader option
- ❖ COMCON IP : Broad Band/Internet interface converter
- ❖ COMCON GPRS : GPRS based Interface converter
- ❖ COMCON TCP/IP : RS232C to Ethernet Converter
- ❖ Vandal Resistant Panel : for housing the system with light & buzzer
- ❖ IP Server : Online Data transfer & Monitoring server /service
- ❖ Compro 2000 : Configuration & Data Download Software
- ❖ eTime Pro : Web Based Attendance Management Software
- ❖ MIS Time Pro Enterprise : Windows Based Attendance Software
- ❖ ID Cards : (a)1K/4K Smart Card (b) Proximity Card (c) HID Card
- ❖ Accessories : (a)Comm. Cable (b) ReX Cable (c) Lock (d)Turnstile

\* Specifications are subject to change without notice. \*\*Smart Finger/Comcon IP & eTime Pro are optional.